

Installation and Development Manual

COM2CORBA

Date: 2009-05-31

Version: 1.1.0 (revision 442)

This document

Summary Manual of the COM2CORBA program.

Author Mikael Rudner

Date 2009-05-31

Version 1.1.0 (revision 442)

Document history

Version	Date	Changes
0.1.0	2009-02-12	Document created.
0.2.0	2009-02-12	New date format.
0.3.0	2009-02-19	Revision in footers and on title page.
0.4.0	2009-02-23	Starting to dokument the Installation Manual.
0.4.1	2009-05-19	Proofread and mostly corrected. A few question marks still exists.
0.4.2	2009-05-20	Fixed the structure of the installation steps.
1.0.0	2009-05-20	First version.
1.1.0	2009-05-31	Moved development to the development manual.

Contents

1	Installation	3
1.1	Program Requirements	3
1.2	Installation	3
1.2.1	COM2CORBA	3
1.2.2	Install TAO	3
2	Uninstallation	5

Chapter 1

Installation

This document defines the Program Requirements, installation procedure and how to remove the COM2CORBA application.

1.1 Program Requirements

- Microsoft Windows XP, Microsoft Windows Server 2003 or later.
- Microsoft Visual Studio 2008 Standard, Professional or Team System edition with SP1¹.
- The ACE ORB (TAO)

1.2 Installation

To install the program please follow the guidelines below.

1.2.1 COM2CORBA

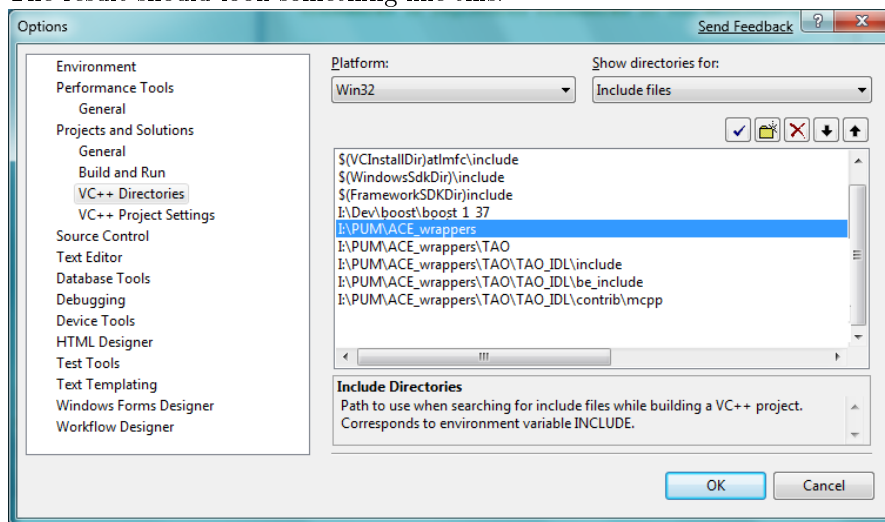
1. Unrar the “com2corba.zip” to the destination where you want the project.
2. Install TAO, see below.
3. Compile COM2CORBA by opening the solution file with visual studio and Build the solution.
4. COM2CORBA is ready to be used. Remember that you need to have the template directory in the same directory as the binary in order to run the program.

1.2.2 Install TAO

1. Download ACE+TAO from <http://download.dre.vanderbilt.edu/>
2. Unpack it to catalog of your choosing
 - (a) Copy config.h from the com2corba.zip to “ACE_Wrappers/ace/config.h”
3. Start Visual Studio

¹SP1 required only for TR1 libraries, if another TR1 library is used SP1 is not required.

4. Go to Tools->Options
5. Choose “Projects and Solutions” -> “VC++ Directories”
6. Choose “Include files” in the dropdown menu to the right. Add the directories where you unpacked ACE, to the existing directories.
 - (a) \ACE_wrappers
 - (b) \ACE_wrappers\TAO
 - (c) \ACE_wrappers\TAO\TAO_IDL\include
 - (d) \ACE_wrappers\TAO\TAO_IDL\be_include
 - (e) \ACE_wrappers\TAO\TAO_IDL\contrib\mcpp
 - (f) The result should look something like this.



7. Choose “Library files” in the dropdown menu to the right. Add the directories where you unpacked ACE, to the existing directories.
 - (a) \ACE_wrappers\lib
8. Build the TAO_IDL frontend and backend (it is located under ACE_wrappers\TAO\TAO_IDL).
9. Copy the DLL-files so they can be used by the com2corba executables.

Chapter 2

Uninstallation

To uninstall the program you only need to delete the files of the program.